

LEGAL ®EVOLUTION

EXPO & CONGRESS 2018



CHANGE JOURNEY

Über die Zukunftssicherung der Rechtsabteilung von BOSCH

Bosch – a few facts

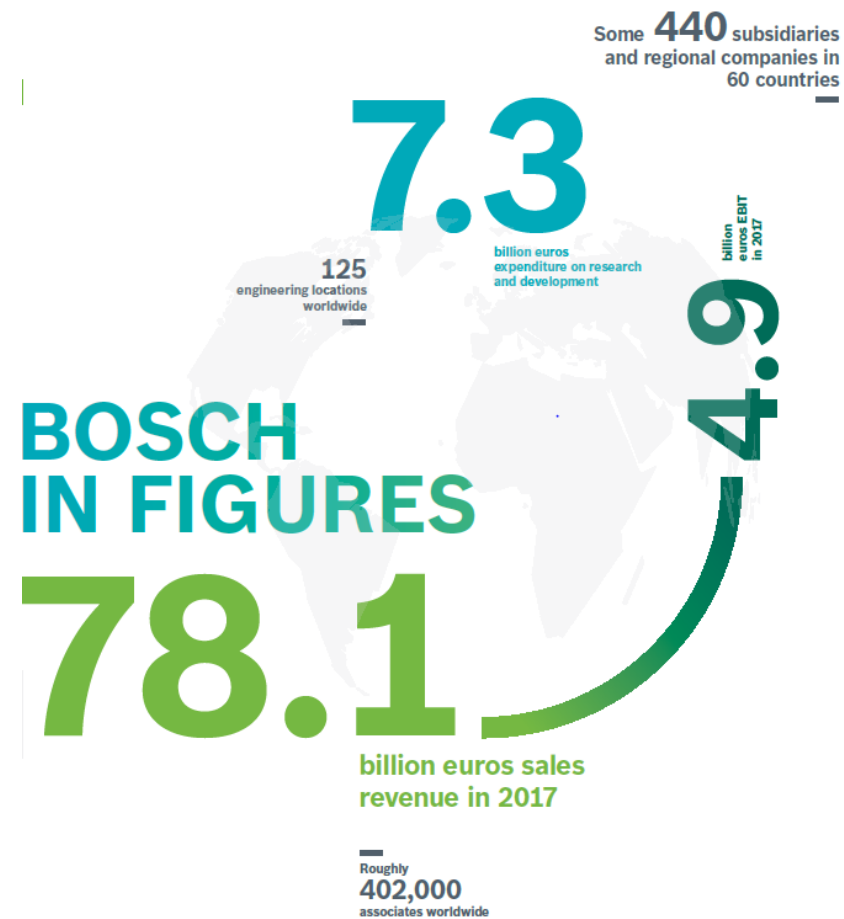
1886: The “Workshop for Precision Mechanics and Electrical Engineering” opens in Stuttgart

1912: First production in the USA

1964: Robert Bosch Stiftung acquires a majority stake in Robert Bosch GmbH

1978: ABS goes into series production

2011: Series start drives for e-bikes



Bosch – Four business sectors

Mobility Solutions



47,4 billion EUR

Industrial
Technology



6,8 billion EUR

Energy and Building
Technology



5,4 billion EUR

Consumer Goods



18,5 billion EUR

Bosch – a global network



- ▶ more than **440** subsidiary companies and regional subsidiaries in some **60** countries
- ▶ **126** production sites at **30** countries
- ▶ Legal department: with **31** locations present in **22** countries (status 2017)

Orientation towards generalists

prioritization

paradox

The project

Orientation towards generalists

prioritization

paradox

Counsel to Management

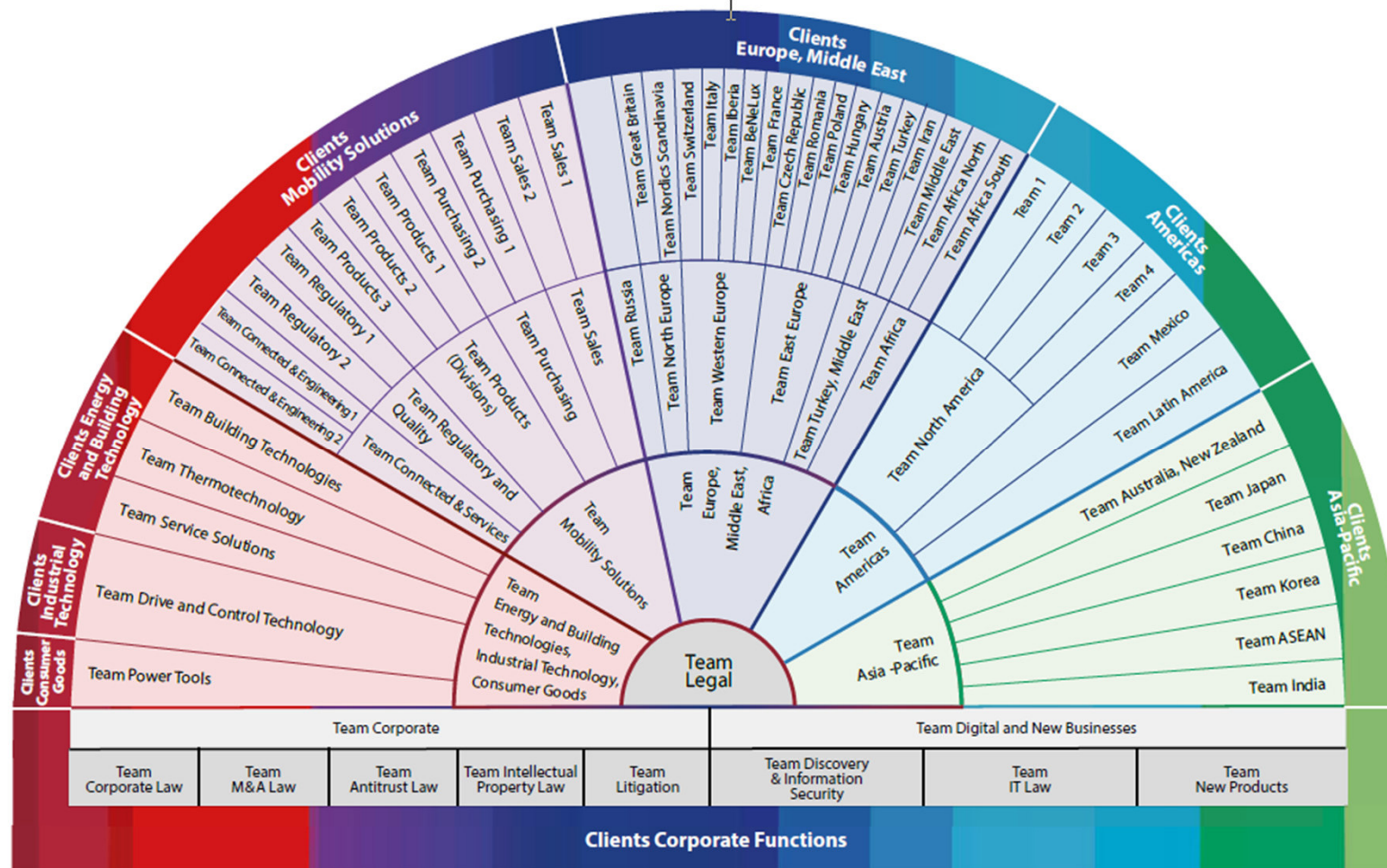
legal risk management

resources

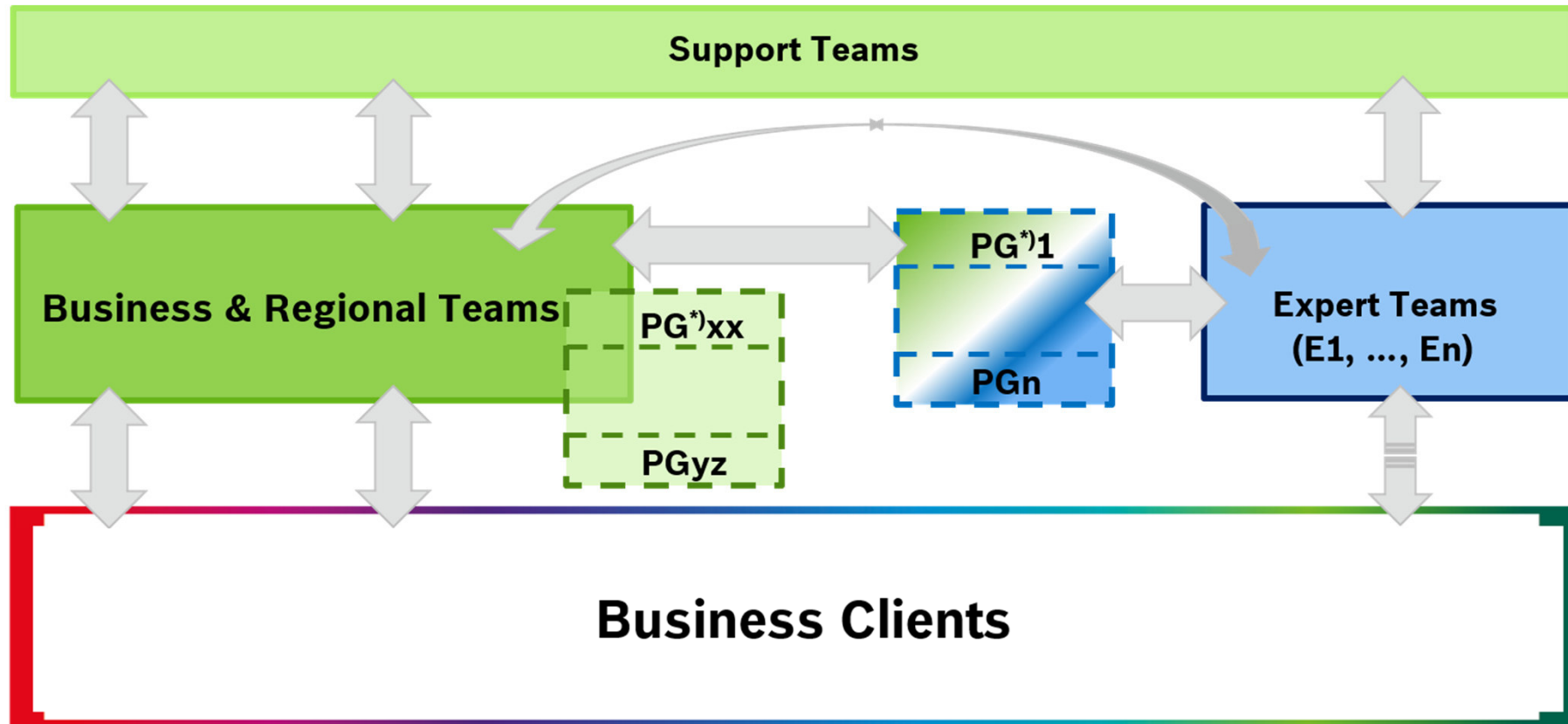
benchmark

The project

Our Leadership Model



Our Collaboration Model



^{*)} PG: Practice Group; — Org. Units; - - virtual Org. Units

The future

